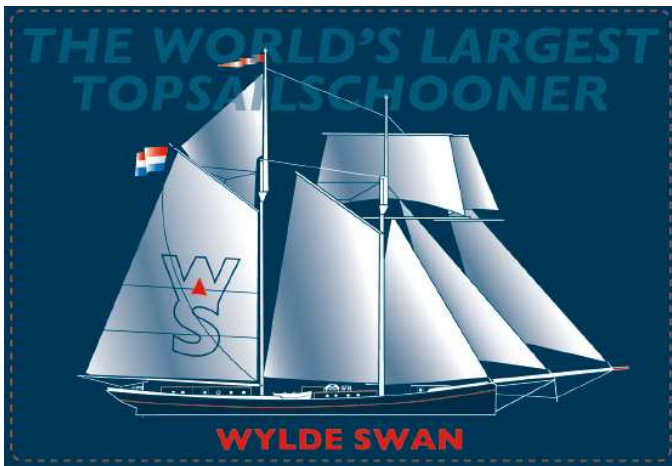


TALL SHIP RACE 2010 – CRUISE IN COMPANY AND RACE 2 NORTH SEA TALL SHIPS REGATTA 2010 - RACE at TALL SHIP WYLDE SWAN

- > Chase the price with the old market chaser
- > Be one of the first trainees on board of the rebuilt ship
- > In July and August 2010, Denmark – Norway – UK – Netherlands
- > Open to trainees of all ages over 15 years

Have you ever dreamed of sailing on board a big vessel? At Sea Sail training can give you a taste of life on board of a Tall Ship and no experience is needed! Together with your teammates from all over Europe, you will be introduced to all aspects of ocean-sailing. A professional crew will teach you everything you need to know about navigating, sailing and manoeuvring. Enjoy working in a team, pushing yourself, making new friends and then partying together at the famous crew parties. There will be adventure and action at sea!



THE TALL SHIP RACE

Wylde Swan will challenge his first regatta after the rebuilding is finished in spring 2010. The high expectations are promising. The first leg will be with an special international exchange from the EU – Youth in Action with youngsters from different countries.

The Cruise in Company from Aalborg (Denmark) to Kristiansand (Norway) will be beautiful sailing along the Scandinavian coast like the Vikings used to do! The trip will go along a lot of islands, with long days and short nights because of the summer season.

From Kristiansand (Norway) to Hartlepool (UK) will be a challenge to fight the North Sea with his changing winds and unexpected seas. Once the Vikings sailed there in hoping to find land. Today, the Wylde Swan sails here, racing for the first price!

WYLDE SWAN

The Wylde Swan is the largest Top Sail Schooner, with the hull of a 'Market Chaser'. The hull was made in 1920 to bring herring from the drifters to ashore and get the best 'market price'. Now she will chase after a price. The Wylde Swan is built according to the plans of Willem Sligting and Hinke de Vries, an experienced couple in building ships.

THE CREW

The captain Jurgens Hanekom and his crew are professionally prepared to act as sailing tutors. The 12 crewmates are well trained and all have been educated on a nautical college and done the STCW safety trainings. The captain has been a sailor for many years on the similar ship Swan fan Makkum and knows how to sail a race.

ACCOMODATION

The enormous hold where the herring was stowed, is now become a place to meet and sleep. In bunks and in hammocks the trainees will sleep in the saloon. There are also a few cabins with normal beds. The meals will be in the bar annex classroom. The atmosphere is modern, to show a new kinds of sailing adventure. Sailing on a traditional ship with a modern look.

PROGRAMME OUTLINE

> Each trip starts at 18.00 hours when you will board Wylde Swan and get to know the ship, permanent crew and your fellow voyage crew members. After a warm welcome during the Captains introduction and the safety briefing, it is time to have a nice evening on board or in the city. There is always a lot to see and to do in the Tall Ship Regatta Harbour's. Should your travel schedule mean that you arrive before 18.00 hours, you may be able to store your bags aboard and have a look around in town (please check first).

> After a hearty breakfast the next day, the first deck instructions will be given. Together with the crew the ship will be made ready for leaving the harbour. The sails will be set for the Parade of Sail. A lot of people will be on the quay and in little boats to wave to you and wish you luck. Of course the start of the Race is spectacular with all the Tall Ships going over the starting line together. This is an exciting but challenging moment, which needs a lot of concentration from the crew and the trainees.

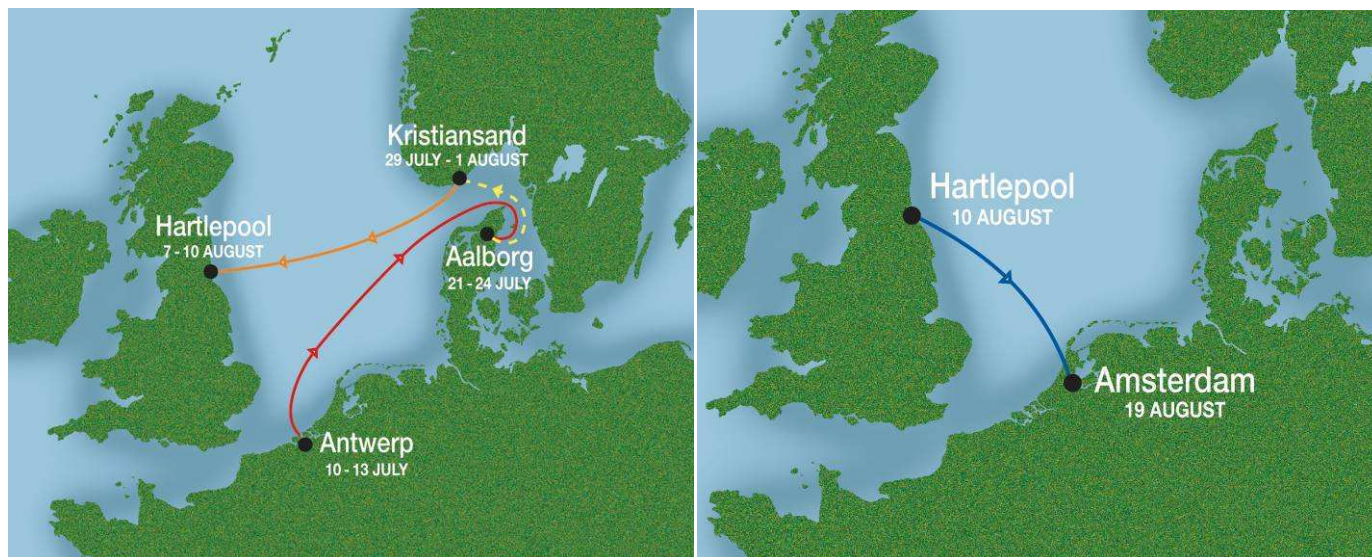
> On board you will be divided into three watches. This means that you will also be on watch during the night sometimes. You will all learn to set the sails, to steer the vessel, to help the cook with the meals and to clean the ship inside and out. You do this during your watch, but also when it is necessary outside of your watch. It is good to work together and take care of the ship. It is a challenge to set a good racing time, but there will be a good mood on board and you will become part of the crew like a real trainee. Your watch leader will be there to guide you, along with the duty officer, a member of the permanent crew.

> The finish can be spectacular when there are other ships around, or quiet because you are the first! If there is enough time, the captain will search for a nice anchorage to enjoy the last evening at sea before sailing into the next Tall Ship Regatta harbour.

> In the harbour there will be a lot of activities organized by the town. There will be all kinds of music, sometimes a fair and there will also be a cultural program. There will also be an opportunity to challenge the crew from other ships through sports, walk the crew parade through the whole city, get a prize (winning, friendship, etc) during the prize giving ceremony and last but not least, there is a crew party for everybody in the Tall Ship Regatta harbour.

> On the 3rd day in harbor the voyage will end at 09.00 hour. You will look back on a once in a lifetime experience! For people who want to race or sail again, there are even more possibilities; either on Wylde Swan (if there is room) or on other ships who are joining the next leg of the races!





VOYAGES WYLDE SWAN 2010

Voyage Trip

Tall Ship Race 2010

Cruise in Company Aalborg (Denmark) – Kristiansand (Norway)

Race 2 Kristiansand (Norway) – Hartlepool (UK)

North Sea Tall Ships Regatta

Race Hartlepool (UK) – IJmuiden (Netherlands)

Start	End	Days	Price > 25 years	Price 15-25 years
23-7	31-7	8	€ 920,-	€ 800,-
31-7	09-8	9	€ 1035,-	€ 900,-
10-8	18-8	8	€ 920,-	€ 800,-

KITLIST

Papers and insurance: You need to have a valid passport or identity card, photocopies of insurance papers (health insurance and travel insurance). Insurance: we expect each participant to have his or her own liability insurance and medical insurance valid in your country. We also expect every trainee to have travel insurance.

Clothing: For your voyage it is important to bring warm and waterproof clothing, although it is summer. For a full list of tips what to bring aboard, [please click here for the separate Kit List](#).

More ideas: photo and film equipment, sunglasses, hat to cover your head in the sun, personal medicines and toiletries, small backpack for in the harbour, musical instruments or music.

HOW TO JOIN?

Please sign up via www.atseasailtraining.com

You will get a contract and invoice by email. As soon as we get the signed contract and down payment, you will be sure of your place on board.

KEY POINTS

- > Wylde Swan- Largest Top Sail Schooner- 62 meters.
- > 36 trainees and 12 crew!
- > No sailing experience required!
- > Open for all ages, minimum age 15 years old.
- > Official language aboard: English.
- > One-off registration costs of €25.
- > All prices exclude transport to and from the ports.
- > All prices include accommodation, all meals and drinks on board, excluding drinks at the bar.> Transfers needed to be booked separately.
- > You can contact other participants by Facebook to travel together.

– SEE YOU AT SEA!–

CONTACT

At Sea Sail Team:
Monique Touw
Janine Scheele

AT SEA SAIL TRAINING

Groen van Prinstererstraat 40-3H
1051 EN Amsterdam
The Netherlands

T + 31 20 688 0462

M + 31 61 131 6997

F + 31 84 724 1451

www.atseasailtraining.com

info@seasailtraining.com

Skype: At Sea Sail Training

Facebook: At Sea Sail Training